

# Clevershare guide

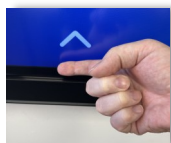
Clevershare is a program for sharing your computer screen wirelessly with a Clevertouch display when your computer is on the school's **EDU** or **GUEST** network.

Clevershare is automatically installed on all EAAA employees' computers, but can otherwise be downloaded at: [www.clevertouch.com/dk/clevershare2g](http://www.clevertouch.com/dk/clevershare2g)

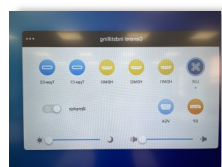
## How do I use Clevershare?

Before you can use Clevershare, you must make sure that the Clevertouch display is set to source **LUX**.

- To check or change the source, **swipe up** from the **bottom** of the **screen**.



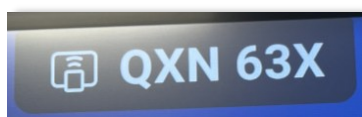
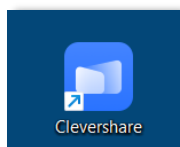
- Then select **LUX** in the menu.



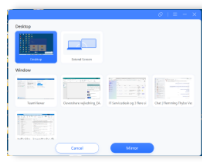
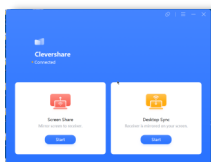
- You will now return to a screen that looks like this.



- Open the **Clevershare app** on your computer and enter the **6-digit code** from the top of the Clevertouch display in the **Clevershare app** on your computer:



- Then click on **Screen Share** and choose whether you want to show the entire **Desktop**, or a specific program **Window**.



- Remember to close the connection by clicking **Close** in the **Mirroring window** at the top of the Computer display after use.

