

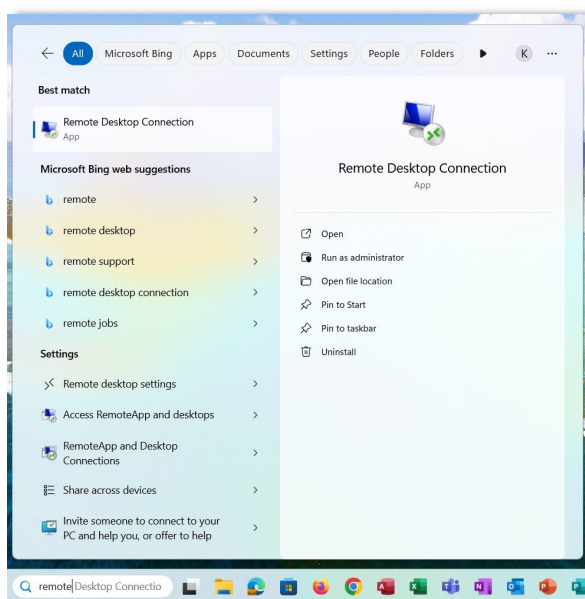
Remote Desktop on Windows 11

It is possible to connect to the school's network and programs, for students and staff, from home via Remote Desktop.

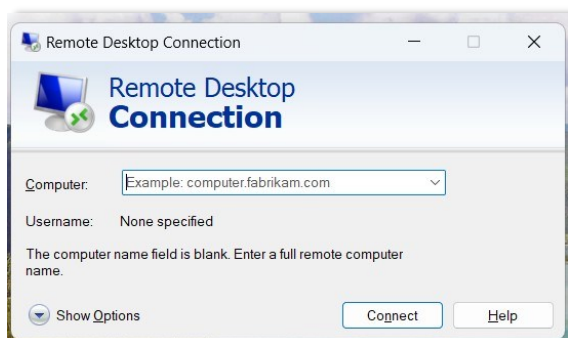
You will have access to Microsoft Office, email, internet and your network drives, etc. You will only see the programs installed on the school network, not your own private programs.

It is not possible to install programs etc. on the Remote Desktop yourself.

- You must do the following:
- Click **Search**, and enter **remote desktop**, then when **Remote Desktop Connection** appears in the list, press the **Enter key**.



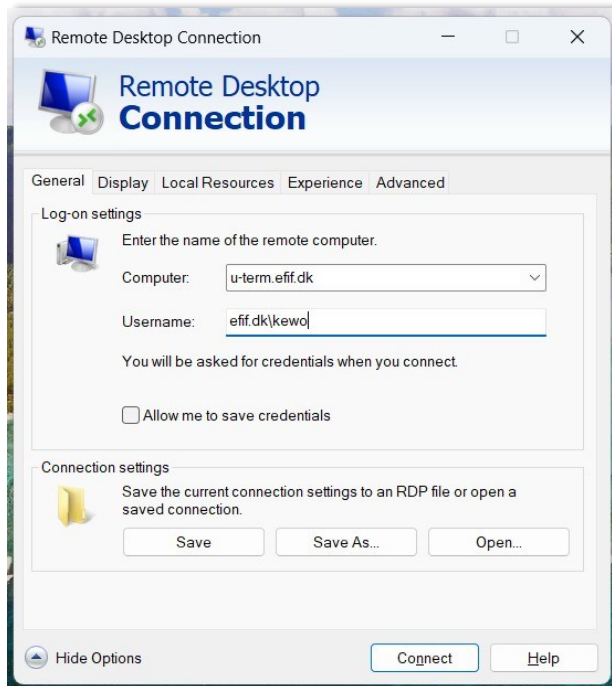
- **Remote Desktop Connection** appears.



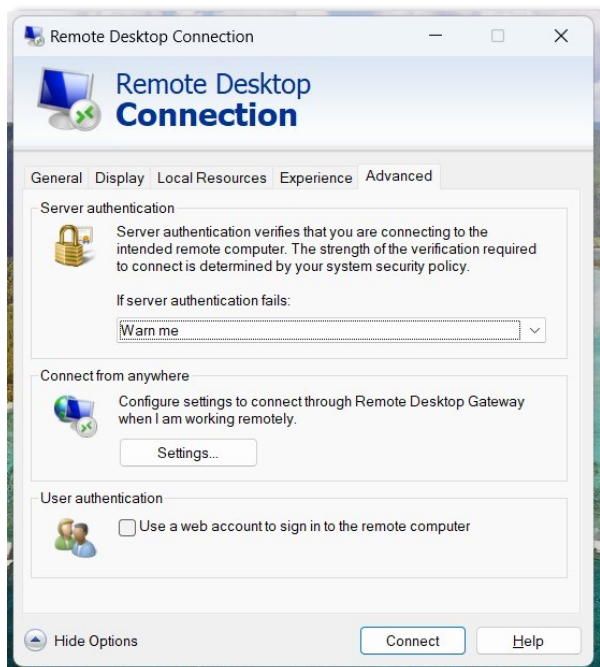
- Click **Show Options**.

Remote Desktop on Windows 11

- Type ***u-term.efif.dk***, as shown in the image in ***Computer***.
- In ***Username*** enter ***efif.dk\your username***

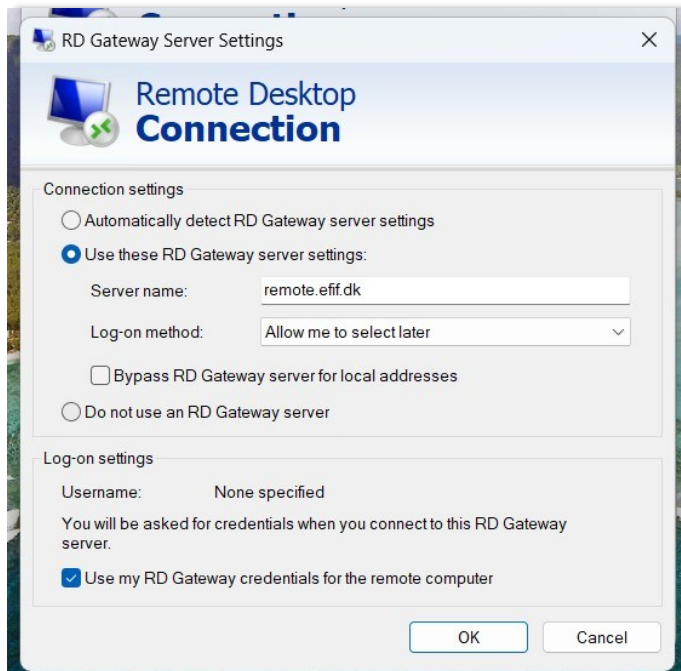


- Press the ***Advanced*** tab.



Remote Desktop on Windows 11

- Press the **Settings...** button and fill in the settings as shown.



- Enter **remote.efif.dk** in **Server name:**
- Also, **check Use my RD Gateway credentials for the remote computer.**
- Then press **OK**.
- Click **Save** in **Connection Settings**.
- Connect to Remote Desktop by clicking **Connect** and entering your **password** when prompted.