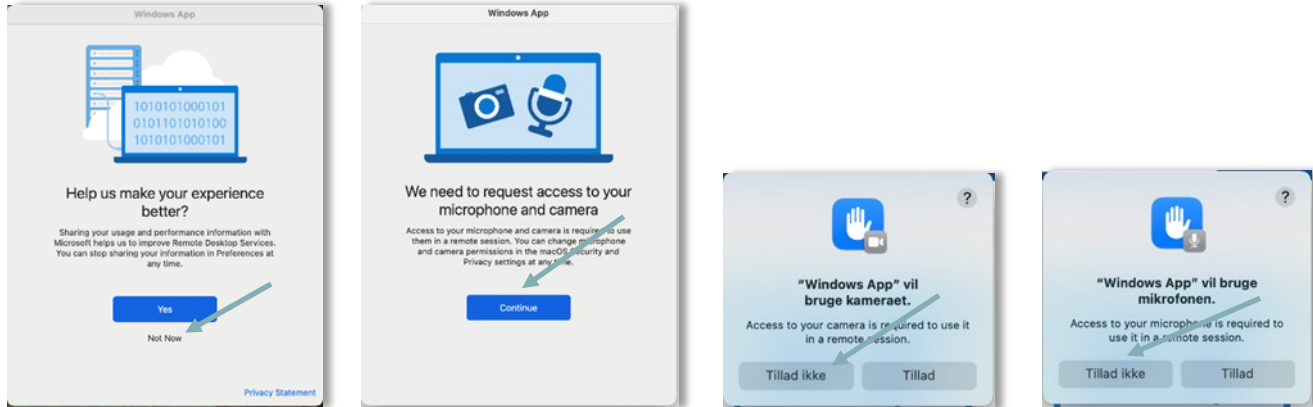
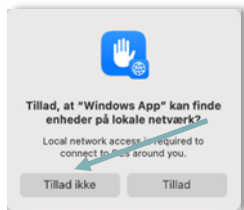


Remote Desktop on Apple Mac (Windows App)

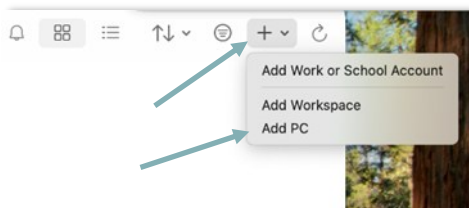
- Start by going to the **APP Store** and searching for **Windows App**.
- Install the program and click **Open**. A small wizard will now appear where you have to choose a few things. Follow the **arrows** and click:



- There is no need for the program to access the camera and microphone.
- Now there will be a short intro to the program, you can follow it or choose to click the **Skip** button.
- Next, you must choose whether the program is allowed to search for devices on the network.



- This shouldn't be necessary, so select **Don't Allow**.
- Now the remote desktop needs to be added. Click on **+** in the top right corner, click on **Add PC**

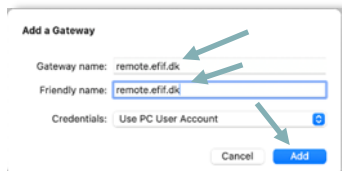


Remote Desktop on Apple Mac (Windows App)

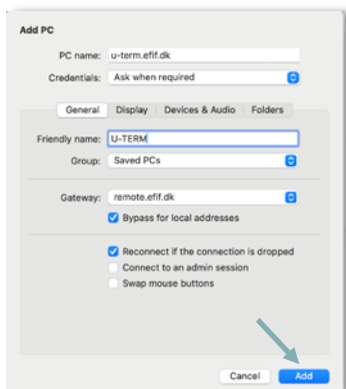
- Fill in the box as shown and click **Add Gateway** in the list under **Gateway**



Now fill in this box as shown and click **Add**.



- You are now ready to create the remote desktop configuration, click **Add**.



- Double-click on your new access and fill in your **school username** and **password** and click **Continue**. You should now be logged into the remote desktop.



- Skulle det ikke lykkes, er du velkommen til at kontakte IT-ServiceDesk for hjælp.